

◀ KLC SCHOOL OF DESIGN

Alison Teverini describes her personal style as 'elegant with understated glamour', which is certainly reflected in this design for a living room in her Petersham House project. The concept aims to embrace luxury and functionality, focusing on comfort and practicality using rich materials and textures. The design is conveyed in her preferred medium of hand-drawn concept sketches, which she believes are 'a vital part of the creative process, which quickly visualize ideas and engage clients on a personal level'. With a background in illustration and a successful career in television production under her belt, Teverini hopes to move on to residential interior design. www.alisonteverini.co.uk



◀ KLC SCHOOL OF DESIGN

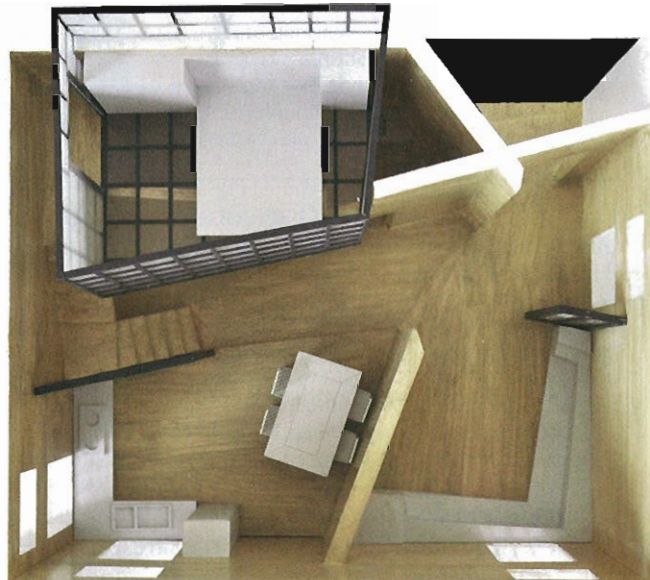
For her final project, **Elena Kolesnikova** redesigned the reception, lounge and bar at Home House, the London members club based in a Grade I and II listed building. With a design based on an imaginative conceptual examination of human nature, Kolesnikova uses large masks as furniture and paintings by Begoña Montalbán depicting mimes to unite the space with a unique and striking theme. At the KLC graduation ceremony, Kolesnikova was awarded a prize for creative use of technology. She now hopes to work as a designer, having previously worked in furniture supply in Italy and Russia for companies such as Karim Rashid. kea_contact@mail.ru

▼ THE INTERIOR DESIGN SCHOOL

Thomas Malher's realistic and futuristic renderings depict his concept for a digital arts gallery and learning centre in north west London. The design is very much in keeping with what he describes as his 'innovative approach to light and passionate dialogue with art'. Using an industrial polished concrete aesthetic on the walls and floor, striking black-and-white graphics highlight key areas of the bar area while the fragmented ceiling brings in ample natural light. Themed around sharp angular detailing, the aptly specified furniture includes the Diamond armchairs and side tables, designed by Sule Koc for Ilio, and Konstantin Grcic's bar stools for Magis. Mahler is a graduate of the National Polish Ballet School and worked for a while as a photographer but now hopes to pursue a career in interiors. thomas@thomasmalher.demon.co.uk

▼ UNIVERSITY OF THE ARTS LONDON

Renee Yan designed this residence focusing on the theme of transition, for which she aimed to 'bring the client from the heavy stress of the outside world to a final state of relaxation'. On the ground floor, the kitchen/dining, living, bathroom and dressing room spaces are divided by unusually angled walls that take an innovative approach to spatial planning. Upstairs, the master bedroom exists in a isolated pod-like chamber, secluded by translucent glass panelling. Yan's work focuses on organic and functional interiors that explore new approaches to design. She hopes to develop her concepts while studying for an MA next year. www.coroflot.com/reneeyan idfx



POT SHOWCASE

The artist Mark Pedro de la Torre's latest pots are on display in a new exhibition. On show will be vibrant Zigzag pots in terracotta with hand-cut serrations (£75-£150), a weathered cast iron planter of 1m in diameter which weighs a quarter of a tonne (£1,850), and a range of pots in muted shades of textured stoneware, which offers greater frost resistance than terracotta. The show runs from 11 September to 9 October at Tinsmiths in Ledbury, Herefordshire. Tel 01531 632083, www.tinsmiths.co.uk



PHOTOGRAPHY BY MARK PEDRO AND CLARE DE LA TORRE

UK DESIGNERS NOMINATED FOR AWARDS

The winners of Best Private Plots 10, the competition for the design of sustainable private outdoor spaces and gardens, will be revealed on 25 September. Nominees include UK-based designers Catherine Heatherington (whose design for a home on the Hebridean island of Islay is shown here) and Johanna Gibbon from Brighton. The projects can be seen at Loisium Visitors' Centre, Langenlois, Austria from 25 September to 5 November. www.privateplots.at/en



PHOTOGRAPHY BY CATHERINE HEATHERINGTON

RHS goes eco

The new Bramall Learning Centre at RHS Harlow Carr, by architect Andrew Yeats, is designed to have minimal impact on the garden, with features that include a sedum roof and solar panels. The centre will provide an inspirational and environmentally sustainable setting for children and educational groups, and has been shortlisted for a 2010 RIBA Yorkshire White Rose Award for excellence.



PHOTOGRAPHY BY SIRA STUDIO

Notebook

- **Planting Ideas and Making Them Last** is the theme for this year's Association of Professional Landscapers and Society of Garden Designers joint autumn workshop. Subjects will include soil assessment, locating plants and ecological approaches. Birmingham Botanical Gardens, 23 September (book by 17 September). Tel 0118 930 3132, www.the-hta.org.uk
- **Due to funding cutbacks and falling student numbers** Birkbeck College will not be offering the MA in Garden History for 2010–11. However, Writtle College is introducing an MA in Historic Designed Landscapes, validated by the University of Essex. Covering landscape theory, history and conservation management, it starts on 20 September (full/part-time). Tel 01245 424200, www.writtle.ac.uk
- **The survival strategies of plants of the highveld in South Africa** is the subject of a lecture by Braam van Wyk, professor of botany at the University of Pretoria, at the Garden Museum, London. He will be joined, after his talk, by Professor James Hitchmough of Sheffield University. 28 September, 6.30pm. Tickets cost £20 (Museum Friends £15). Tel 020 7401 8865, www.braamvanwyk.eventbrite.com
- **Established and student designers and landscape architects** are invited to submit their designs for the 20th Chaumont-Sur-Loire International Garden Festival in 2011. The theme is 'Gardens of the Future or the Art of Happy Biodiversity'. Closing date is 18 October. Tel +33 (0)2 5420 9922, contact@domaine-chaumont.fr
- **Book now for the Society of Garden Designers autumn conference** themed *From Concept to Canopy: Trees in Time, Space and Place*, with speakers such as Tony Kirkham, Rick Darke and Julie Toll. Imperial College, London, 9 October. Tel 01989 566695, www.sgd.org.uk